

THERE'S
A DOOR
FOR YOUR
EVERY
**CREATIVE
EXPRESSION.**

THE LEGACY OF
CRAFTSMANSHIP

MASTERPIECES FROM THE HOUSE OF GREENLAM

Every artist needs a canvas. For Greenlam, every home is one. Greenlam is India's No. 1, Asia's largest and among the top 3 laminate brands in the world. Renowned all over the world, it stands as a symbol of excellence across 100 countries.

Since its inception, Greenlam has been a hallmark of exceptional artistry and unbridled passion for innovation. It offers end to end surfacing solutions with its expansive selection spread across laminates, compacts, veneers, engineered wooden floors, and engineered wooden doors. With two state-of-the-art manufacturing facilities in the country, it is the first choice for individuals, Architects, and Interior Designers when it comes to transforming living spaces. Not to mention, its vibrant designs add that touch of magnificence to any space. With over 12,000+ distributors and dealers along with a robust team of around 3,700 professionals, Greenlam is just a call away to turn your spaces into an unforgettable experience.

We work in harmony with our environment. Greenlam thinks and acts to save and preserve nature in its pristine form by ethical sourcing of its raw materials from the world over. Along with this, the technology that is used to create the products is environment friendly and the waste is fully recyclable, which ensures a minimal carbon footprint. The biggest testimony to this fact is Mikasa Doors & Frames.

OUR OTHER BRANDS



MIKASA DOORS & FRAMES OFFERINGS

Mikasa Doors & Frames have been designed for every need and purpose. Be it from the point of view of an Architect, an Interior Designer, or a home owner, we have a door for everyone.

FIRE RATED DOORSETS

Available in fire rating of FD30, FD60, FD90, and FD120 with thickness of 44mm, 54mm, and 64mm respectively.

Mikasa Fire Rated Doorsets provide a safe exit in case of fire emergency by preventing the spread of fire and smoke. It's an integrated fire protection system with a fire door leaf, frame, and fixtures that comply with BS476 Part 22 and carry Exova, BM Trada, Q-Mark certification and IS:3614.

NON-FIRE RATED DOORS & DOORSETS

Available in varying thickness of 32mm, 35mm, 38mm, and 44mm.

These doorsets are made of 3 layers with a solid core/tubular core which is sturdy and load bearing. It has various applications in residential and commercial spaces, where fire doors are not mandatory. Unfinished door leaf can also be supplied with either veneer or HPL facing, which can be resized up to 10mm on each side.



SPECIALITY DOORSETS

- **Radiation Shielding/Clean Rooms:** Constructed for areas exposed to high levels of radiation such as hospitals and laboratories. These are available with or without vision panels.
- **Acoustics:** Designed to achieve optimum levels of sound reduction in the range of 29-45dB with thickness varying between 38mm to 44mm.

WHY CHOOSE US?

Innovation is breaking away from tradition. Rules create uniformity. Breaking away from the norm results in something unique.



When we think of a door, we think of the wood and the craftsman behind it. In a market served by traditional flush doors, Mikasa Doors & Frames introduces a revolutionary concept. It offers factory finished doorsets to suit every room and purpose.

Mikasa Doors & Frames are available in a variety of configurations be it individual leaf, frame or a complete doorset solution. All the components such as door leaf, frame, and architectural ironmongery work together as a unified product, meeting certified performance levels. The doors and frames are carefully selected and tested to provide a coordinated, fit-for-purpose, certified package, offering comprehensive product performance and life cycle resilience.

PERFECT MATCH

The door frame and leaf have a matching look and finish*, as the decorative veneer and laminate are made in-house. This isn't possible through traditional methods, where the frame and leaf come from different vendors and are hand finished on-site.

FACTORY FINISHED

Aesthetics, fit and finish are superior than the ones in the market. UV Lacquer and polishing line used in the process follow latest European practices which leads to rich colour and lustre in doors.



STRENGTHENED FOR STABILITY

The unitised construction of Mikasa engineered doorsets makes it stronger than wooden doors. The factory finish ensures a comprehensive 6-side protection, shielding the door against hostile weather conditions.

GLOBAL CERTIFICATIONS

Mikasa Doors & Frames hold ISO 9001, ISO 14001, ISO 18001 & FSC-Certification. The fire doorsets also comply to BS476 Part 22 Q mark fire testing certification and IS:3614.

*Wood being a natural product, the grain, shade, and texture may vary.

COMPLETE PACKAGE

Complete door solutions as doors, frames, and accessories are shipped from factory as a fully finished single doorset. Mikasa doors are supplied just-in-time to match the on-site progress, which in turn curbs the risk of advanced buying, which could force a change in aperture size.

MADE TO FIT

The factory finished doors and frame don't require resizing. The product looks new for a lifetime as the factory finish lasts for a long-time.



SUPERIOR RAW MATERIALS

The longevity of Mikasa doorsets and their superior finish is a result of high quality of imported raw materials and the premium quality of Decowood Veneers and Greenlam Laminates. The hardware also comes with a Mikasa badge which guarantees a long-life.

CRAFTED TO LAST

Mikasa doorset is backed with up to 5-year performance guarantee. Superior product design, manufacturing, and installation processes result in a lifetime performance with minimal maintenance.

GREEN CONSCIENCE

We, at Mikasa, understand our responsibility towards our planet, and thus invest in sustainable harvesting of trees. We encourage an environmentally conscious workplace by ensuring that our products meet the strictest green building standards. In working towards a sustainable future, we warrant that our wood is ethically sourced.

Mikasa Doors & Frames only uses wood which is sourced from legal, certified, and sustainably managed forests. Our production consists of rigorous quality control checks at every level of the process to meet the international standards of the Forestry Stewardship Council. The integration of technology and creativity has always been our priority and now each step we take towards a beautiful home, ensures a clean and green planet too.

The FSC certification has helped us establish a leaner and more efficient model for sustainable growth, which we have accredited with the Indian Green Building Council for our quality management systems.



HOSPITALITY

Hospitality doorsets play a critical role in making a good first impression - at hotels, restaurants, and other buildings in the customer service industry. From restaurant entrances to hotel room doors, main fire doors, doors for guest room, toilets or more, trust Mikasa for high-performance and aesthetically pleasing hospitality doors which fulfill the needs of any establishment.

RETAIL

When it comes to retail outlets, the look is paramount. Mikasa Doors & Frames with their unique offerings give every space a different look along with safety and convenience.

COMPLETE DOOR SOLUTIONS

Innovation must serve a need. If it doesn't, innovation is pointless. Mikasa Doors & Frames have been designed to suit every need and purpose. Their design and performance have been crafted to match a wide range of sectors and applications.

LEISURE OR RECREATION

Mikasa Door & Frames with their wide variety of colours and designs offer easy and ready solutions to leisure and recreation facility structures.

PUBLIC SECTOR

Public sector buildings require doors which provide high-performance functioning and security. These paramount criteria are easily fulfilled by Mikasa Doors & Frames. These include Safety Exit Fire Doorset, Electric Duct Doors, Shaft Doors, Boardroom and Conference Room Doors, Storeroom Doors, etc.

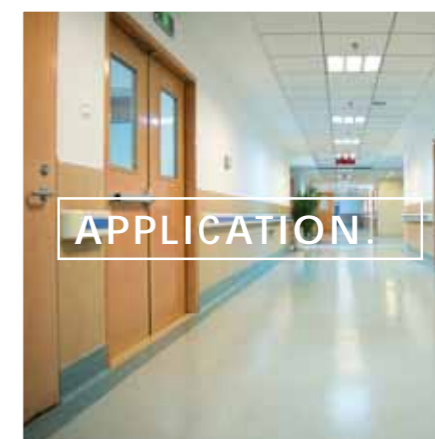


EDUCATION

With unlimited colours and finishes, Mikasa Doors & Frames transform institutions of learning into a fun place. The doors and frames meet every performance, safety, and compliance guidance of competent authorities to create inspirational learning environments. Specialty Doors for libraries, lab rooms, washrooms and classroom doors are also available.

HEALTH

Mikasa Doors & Frames bring together functionality, design, and hygiene to offer a complete solution to the health sector. Easy to clean, antibacterial properties, radiation protection, and flush glazing options make them the ideal choice for Architects and Interior Decorators associated with the health sector.



INNOVATION.

APPLICATION.

RESIDENTIAL

Be it high-end homes and penthouses or high volume for modern living, Mikasa Doors & Frames offer ready and ideal solutions for all types of residential projects. Bespoke interior doorsets in contemporary designs are available to meet the building's interior design scheme.

COMMERCIAL

Mikasa Doors & Frames give Architects and Interior Designers complete freedom when it comes to creating commercial spaces. The wide range of veneers and laminates in a multitude of colours have been created to fulfil every design plan. Mikasa doorsets are available with the option of vision panel and louvre cut-out as well.

DOOR LEAF CONSTRUCTION OF DOOR LEAF

The door leaf used in Mikasa doorsets are aesthetically crafted to perfectly fit into your design. Our door leaves are available in a variety of designs & finishes such as laminated, painted, or veneered, any of which will elegantly complete the look you are striving for. These are available in varying thickness of 32mm, 35mm, 38mm, 44mm, 54mm, and 64mm. For doors which have more than 7 ft. height, a minimum thickness of 38mm is recommended. For special requirement like Fire Rated Doorset, the usage of 44mm, 54mm, and 64mm door leaf thickness to achieve FD30, FD60, FD90 and FD120 ratings respectively is mandatory. We recommend that doors and frames must be installed as a complete set to comply with test evidence.

The core is pre-tested for fabrication of both Fire and Non-Fire Rated Doors, which offer a combination of strength and stability. The core undergoes various durability tests with respect to static torsion, soft & heavy body impact, slamming shut & open, closure against obstruction, resistance to jarring and vibration, operating forces, and cycling.

CORE

MIKASA EMPLOYS TWO TYPES OF CORES FOR ITS DOOR LEAF



Solid Particle Core: These are high performance solid core fillers made up of triple layer density particle board imported from Germany and have dual core layers of high density wood. Density: 500-850 kg/m³



Tubular Core: These are made up of a high performance tubular core with LVL stile and rail. The structure provides extreme stability to the door leaf. Density: 520 kg/m³



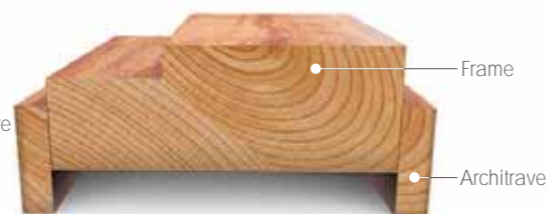
FRAME

Mikasa Frames are factory finished to match the aesthetic look of the door leaf and give a coordinated look to your vision. Mikasa offers frames with various core options so as to make them suitable for Fire rated and Non-fire Rated applications. In case of Fire Rated Doorsets, frames are made using high density hardwood to match the fire rating of the door leaf. Intumescent strips are rebated onto all 3 sides of the door frame which expand to seal the gap between the door and frame to prevent the spread of fire and smoke.

Mikasa frames are made using best quality wood which is kiln dried, imparting its tolerance to seasonal variations in weather. These frames are available in varying surface finishes be it natural, stained, painted, laminated, or veneered. To further enhance the look, architrave is used which covers the gap between wall and frame. Architrave size can be customized as per customer's requirement.

REBATED FRAMES

Rebated frames are made using solid hardwood and are extremely stable. Density: 650-950 kg/m³



ENGINEERED FRAMES

Engineered frames are made with a door stopper. The stopper is also made from matching material and is 15mm thick. It is positioned so that the head of the anchor bolts is covered. Engineered frames are available in following options:



- **LVL Frame:** Laminated Veneer Lumber frame is an engineered wood product that uses multiple layers of thin wood assembled with adhesives which imparts extreme strength. Density: 520-950 kg/m³

- **Hardwood Frame:** This door frame is made up of solid hardwood. Density: 650-950 kg/m³



WOOD LIPPING

Matching hardwood lipping of 6/10/12mm thickness is fixed using specialised edge banders to fully seal the door leaf from all 4 sides. This prevents bending, bowing, and moisture ingress during monsoons. The factory finish results in an attractive and sturdy look.

NOTE: Every effort is made to colour match hardwood door lipping, frames, etc. with veneers and high pressure laminates on door facing. However, as timber is a natural material, variations in shade and colour may occur.

FACING OR FINISHING MATERIAL

Choose from the various options of surfacing material to match your style and interiors. You can choose from an exhaustive collection of Decowood Natural Veneers, Greenlam Laminates, or paint finishes.



FINISHED TO PERFECTION

Combining style with functionality, Mikasa gives you the option to choose from the extensive range of solutions for every need of yours.

DOORS

- **Decorative Veneers:** With Mikasa doors, you can choose from the extensive collection of Decowood Veneers. These highlight the simplicity and natural beauty of wood. Pre-polished in the factory using a UV process, this ensures uniformity and longevity.
- **Decorative Laminates:** Available in solid colours, wood patterns, metallic finishes and textures, the ceaseless collection of Greenlam Laminates lets you bring your vision to life.
- **Paint Finishes:** Mikasa doors can be supplied fully painted in any colour within RAL or any international standard.

FRAMES

- **Decorative Veneers/Laminate:** Engineered frame is veneer/laminate wrapped. You can select from the exhaustive range of Decowood Veneers/Greenlam laminates and create your own unique surfacing option.
- **Decorative Polished/Stained:** Both engineered and solid rebated frames can be stained to match the veneer/laminate specified for the door leaf. Solid rebated frame can also be provided in natural finish.
- **Paint Finishes:** Both engineered and solid rebated frames can be painted in any colour to closely match the door leaf.



Combining performance and non-performance usability, the ironmongery provided with Mikasa Doors & Frames creates visual compatibility, enhanced aesthetics, and offers the highest levels of standard compliance. The installation process is a simple exercise that maximises the benefits of factory preparation.

Mikasa Doors & Frames provide a complete doorset package with each product chosen to meet all technical requirements.

External items like door handle, latches, flush bolts, door stopper, etc., are also available.

Mikasa appreciates the uniqueness which our patrons demand and try to provide solutions to every specific need. This gives you the flexibility to choose your own doorset and ironmongery package to suit your particular project needs.

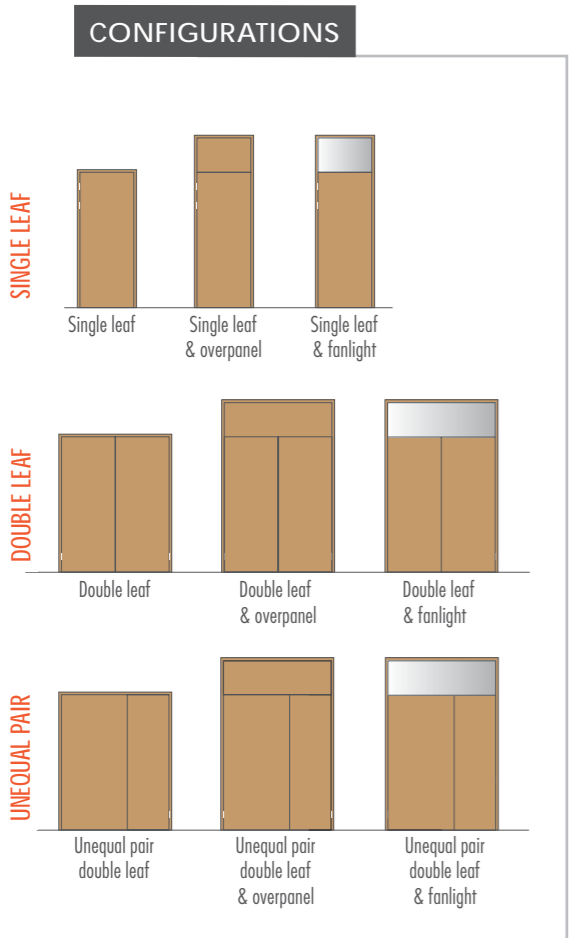
Mikasa employs advanced CNC machinery for recessing ironmongery like hinges, locks, door seals, door closer, etc.

- Pre-fitted hinges meet Mikasa's quality standard
- Reduces installation and hand-over time on site

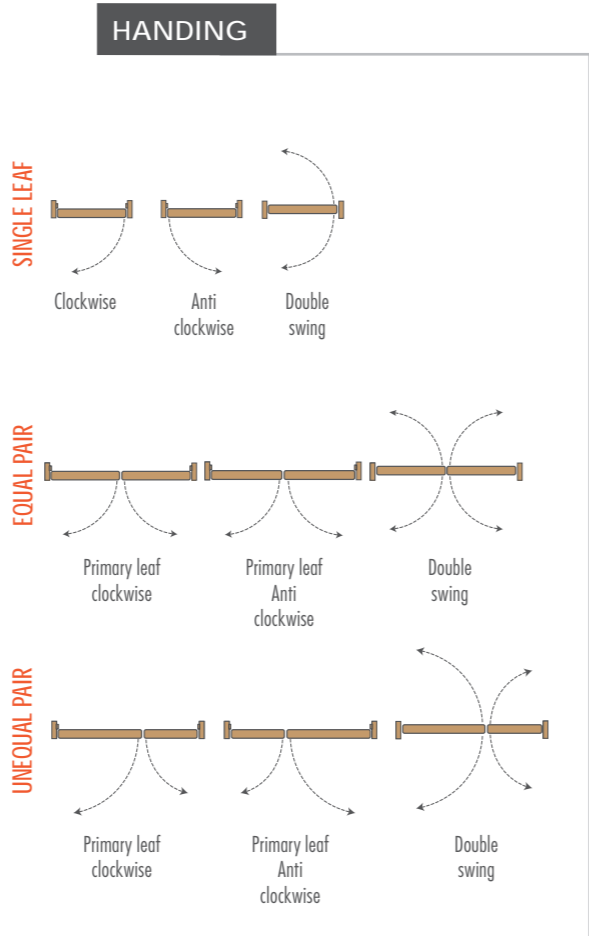


IRONMONGERY

CONFIGURATIONS AND HANDING



Mikasa Doors & Frames are available in a range of configurations and handing to fulfil all project requirements. They are available in single and double leaves (equal or unequal pair) and with both clockwise & anti-clockwise swing.



INSTALLATION AND MAINTENANCE

EASY TO INSTALL

Mikasa Doors & Frames adhere to all the global quality standards. However, there are certain measures which need to be followed to ensure its longevity.

- Mikasa Doors & Frames must not be installed until all wet trades on-site are completed. Kindly refer to installation guide for the exact process of storage, installation, and damage protection.
- As a finished product, the installation of Mikasa Doors & Frames must begin only after one coat of paint has been applied on walls. Even after installation, Mikasa Doors & Frames must be protected until the site is occupied and becomes functional.
- Mikasa Doors & Frames are made as per actual measurements. In case the flooring or plastering is not completed, it would not be possible to take measurements which may lead to unavoidable delays.
- Hinges, lock bodies, and flush bolt bodies can be factory recessed as per client requirement.
- Mikasa Doors & Frames are carefully wrapped and protected to avoid damage during transportation. To simplify handling, doors, and frames are packaged separately.



EASY TO CLEAN

For paint and laminates, a soft duster or soap and water will usually clean the surface satisfactorily to maintain the appearance of painted and laminate facings. For veneer doors, damp cloth is sufficient to clean the surface.

Powder-based cleaners, bleaches, or ammonia should not be used as they can leave a residue unless carefully rinsed off.



CERTIFICATIONS AND COMPLIANCE



FSC® Certified (TT-COC-001844)

Mikasa Doors & Frames are FSC certified which ensures that all our raw materials come from responsibly managed forests. We only use ethically sourced wood without disturbing the natural balance of our ecosystem.



Exova BM Trada, Q-Mark Certifications

We are the only doorset manufacturer in India which is fully certified by the BM TRADA intensive Q-Mark scheme and comply to BS476 Part 22 of the approved documents. Our FD 30, 60, 90, and 120 minutes doorsets carry a tamper evident and fully traceable label incorporating clear and essential information.



Fire Resistance Tested

Mikasa Fire Rated Doorsets are certified by Spectro Analytical Labs Limited for successfully passing Fire Resistance Test for integrity, stability, and insulation and also complies with the requirements of IS:3614.



ISO 18001

We operate a health and safety management system which complies with the requirements of ISO 18001.



ISO 9001 & 14001

We operate a quality management system which complies with the requirements of ISO 9001: 2008 & ISO 14001.

DURABILITY

Mikasa Doors & Frames meet the requirements of EN 1192 for strength classification and EN 12400 for mechanical durability.

RADIATION

Mikasa Doors & Frames meet the requirements with regard to lead thickness and radiation levels.

SECURITY

Mikasa has developed a physical attack test procedure and provides doorset solutions for situations requiring resistance against forced entry, vandalism and most importantly, burglary.

FIRE & SMOKE

Fire & smoke resistance is one of the most fundamental performance criteria for Mikasa. All our fire doorsets comply with the EXOVA, BM Trada, Q-Mark certification.

QUALITY CONTROL

We have implemented 100% pre-delivery inspections to ensure all products are checked for all manufacturing defects, ensuring the highest quality standards.

MOBILITY AND ACCESS

Designer doorset solutions comply with Part M and consider additional BS 8300 provisions for accessibility.

SOUND

Part E of the approved documents 2013 includes quantifiable acoustic performance levels. Designer doorset solutions offer up to 45dB sound reduction and appropriate smoke seals are automatically included with our fire doorsets to suit performance requirements.

MANUFACTURING CAPABILITIES

2 STATE-OF-THE-ART

MANUFACTURING FACILITIES
Behror (Raj)* & Nalagarh (H.P)

25 YEARS

OF MANUFACTURING EXPERTISE

1,46,000

SQ. M. OF MANUFACTURING SPACE

100+ COUNTRIES

OF BRAND PRESENCE

* Mikasa Doors & Frames are Manufactured at Behror (Rajasthan)

PRODUCT RECKONER

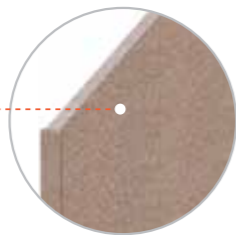
1

DOOR LEAF CORE

Door leaf cores are available in varying thickness of 32mm, 35mm, 38mm, 44mm, 54mm, and 64mm. Mikasa employs two types of cores for its door leaf:

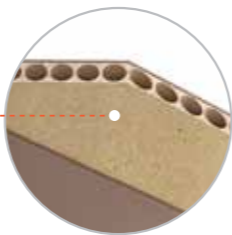
SOLID PARTICLE CORE

High performance triple layer density core
Density: 500-850 kg/m³



TUBULAR CORE

Extremely stable core with LVL stile & rail
Density: 520 kg/m³

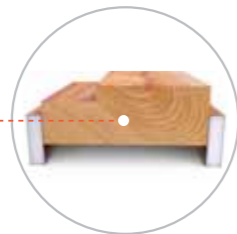


2

DOOR FRAMES

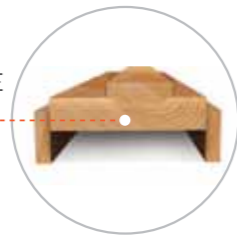
REBATED FRAME

Solid Hardwood Core
Density: 650-950 kg/m³



ENGINEERED FRAME

Solid Hardwood Core
Density: 650-950 kg/m³



LVL Core
Density: 520-950 kg/m³



3

WOOD LIPPING

Matching hardwood lipping of 6/10/12mm thickness is fixed using specialised edge banders to fully seal the door leaf from all 4 sides.

4

FACING OR FINISHING MATERIAL

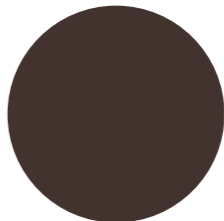
Choose from an exhaustive collection of Decowood Natural Veneers, Greenlam Laminates, or Paint Finishes.



DECORATIVE VENEERS



DECORATIVE LAMINATES



PAINT FINISH

5

INTUMESCENT STRIP

In the incident of fire or when the temperature reaches 180° Celsius, the intumescent strip expands to seal the gap between the door and frame to prevent the spread of fire and smoke.



6

IRONMONGERY

All Mikasa doorsets come with pre-fitted hardware and accessories like hinges, locks, handles for seamless functioning and a long life. Mikasa employs advanced CNC machinery for recessing ironmongery like hinges, locks, door seals, door closer, etc.

- Pre-fitted hinges meet Mikasa's quality standard
- Reduces installation and hand-over time on site



7

CONFIGURATIONS AND HANDING

Available in single & double leaves (equal or unequal pair) and with both clockwise & anti-clockwise swing.

NFR-TUBULAR DOORSET

PRODUCT CODE		DOOR LEAF SPECIFICATION					FRAME SPECIFICATION			
		Door Thickness	Width mm Max	Height mm Max	Door Construction	Lipping	Thickness	Section Width	Frame Material	Frame Finish
LAMINATED	DURA-L	38mm & 44mm	1150	2400	Tubular Core 32mm /38mm*3mm Prelam MDF both sides	PVC	30mm	90-275mm	LVL 30mm, stopper-15mm, Architrave-12mm	a) Laminate-Front b) Backer-Back c) Side-PVC Edge Banding
	HDS-TL	35mm	1150	2400	Tubular Core 32mm +1.5mm Laminate crossband both sides	PVC within the available DURA range /Stained/Painted	30mm	90-275mm	LVL, Solid Steam Beech Stopper 15mm & Architrave 9mm	Stained to match door colour
		38mm & 44mm			Tubular Core 32mm /38mm*3mm MDF crossband & 0.8mm/ 0.5mm Laminate both sides	6mm Steam Beech Matching Stain				
	SWRS-TL	35mm	1150	2400	Tubular Core 32mm +1.5mm Laminate crossband both sides	PVC within the available DURA range /Stained/Painted	45mm Rebated	90-275mm	Solid Wood Steam Beech Frame & 9mm Architrave	Stained to match door colour (Back side black japan+sealer)
		38mm & 44mm			Tubular Core 32mm /38mm*3mm MDF crossband & 0.8mm Laminate both sides	6mm Steam Beech Matching Stain				
	VENEERED	HDVN-TVN	38mm & 44mm	1150	2400	Tubular Core 32mm /38mm*3mm MDF crossband & 0.5mm Veneer both sides	6mm Steam Beech Matching Stain	30mm	90-275mm	LVL with 0.5mm Veneer, LVL Stopper 15mm with 0.5mm Veneer, LVL Architrave 12mm with 0.5mm Veneer
HDS-TVN		38mm & 44mm	1150	2400	Tubular Core 32mm /38mm*3mm MDF crossband & 0.5mm Veneer both sides	6mm Steam Beech Matching Stain	30mm	90-275mm	LVL, Solid Steam Beech Stopper 15mm & Architrave 9mm	Stained to match door colour
HDS-TVS		38mm & 44mm	1150	2400	Tubular Core 32mm /38mm*3mm MDF crossband & 0.5mm Backer Veneer both sides	6mm Steam Beech Matching Stain	30mm	90-275mm	LVL, Solid Steam Beech Stopper 15mm & Architrave 9mm	Stained to match door colour
HDVS-TVS		38mm & 44mm	1150	2400	Tubular Core 32mm /38mm*3mm MDF crossband & 0.5mm Backer Veneer both sides	6mm Steam Beech Matching Stain	30mm	90-275mm	LVL with 0.5mm Veneer, LVL Stopper 15mm with 0.5mm Veneer, LVL Architrave 12mm with 0.5mm Veneer	a) Veneer Stained-Front b) Sealer-Back c) Side-Veneer Stained Edge Banding
SWRS-TVN		38mm & 44mm	1150	2400	Tubular Core 32mm /38mm*3mm MDF crossband & 0.5mm Veneer both sides	6mm Steam Beech Matching Stain	45mm Rebated	90-275mm	Solid Wood Steam Beech Frame & 9mm Architrave	Stained to match door colour (Back side black japan+sealer)
SWRS-TVS		38mm & 44mm	1150	2400	Tubular Core 32mm /38mm*3mm MDF crossband & 0.5mm Backer Veneer both sides	6mm Steam Beech Matching Stain	45mm Rebated	90-275mm	Solid Wood Steam Beech Frame & 9mm Architrave	Stained to match door colour (Back side black japan+sealer)

NFR-SOLID CORE DOORSET

PRODUCT CODE		DOOR LEAF SPECIFICATION					FRAME SPECIFICATION			
		Door Thickness	Width mm Max	Height mm Max	Door Construction	Lipping	Thickness	Section Width	Frame Material	Frame Finish
LAMINATED	HDS-HL	38mm & 44mm	930	2350	Solid Core 38mm/44mm +0.8mm Laminate both sides	6mm Steam Beech Matching Stain	30mm	90-275mm	LVL,Solid Steam Beech Stopper 15mm & 9mm architrave	Stained to match door colour
		54mm	1150	2750	Solid Core 44mm+5mm MDF Crossband & 0.8mm Laminate both sides					
	SWRS-HL	38mm & 44mm	930	2350	Solid Core 38mm/44mm +0.8mm Laminate both sides	6mm Steam Beech Matching Stain	45mm Rebated	90-275mm	Solid Wood Steam Beech Frame & 9mm Architrave	Stained to match door colour (Back side black japan+sealer)
		54mm	1150	2750	Solid Core 44mm+5mm MDF Crossband & 0.8mm Laminate both sides					
VENEERED	HDS-HVN	38mm & 44mm	930	2350	Solid Core 38mm/44mm +0.5mm Veneer both sides	6mm Steam Beech Matching Stain	30mm	90-275mm	LVL,Solid Steam Beech Stopper 15mm & 9mm architrave	Stained to match door colour
		54mm	1150	2750	Solid Core 44mm+5mm MDF Crossband+0.5mm Veneer both sides					
	HDVN-HVN	38mm & 44mm	930	2350	Solid Core 38mm/44mm +0.5mm Veneer both sides	6mm Steam Beech Matching Stain	30mm	90-275mm	LVL with 0.5mm Veneer,LVL stopper with 0.5mm veneer & LVL Architrave 12mm with 0.5mm Veneer	a) Veneer-Front b) Sealer-Back c) Side-Veneer Edge Banding
		54mm	1150	2750	Solid Core 44mm+5mm MDF Crossband+0.5mm Veneer both sides					
	HDS-HVS	38mm & 44mm	930	2350	Solid Core 38mm/44mm +0.5mm Veneer both sides	6mm Steam Beech Matching Stain	30mm	90-275mm	LVL,Solid Steam Beech Stopper 15mm & 9mm architrave	Stained to match door colour
		54mm	1150	2750	Solid Core 44mm+5mm MDF Crossband+0.5mm Backer Veneer both sides					
	HDVS-HVS	38mm & 44mm	930	2350	Solid Core 38mm/44mm +0.5mm Veneer both sides	6mm Steam Beech Matching Stain	30mm	90-275mm	LVL with 0.5mm Veneer, LVL stopper 15mm with 0.5mm veneer & LVL Architrave 12mm with 0.5mm Veneer	a) Veneer Stained-Front b) Sealer-Back c) Side-Veneer Stained Edge Banding
		54mm	1150	2750	Solid Core 44mm+5mm MDF Crossband+0.5mm Backer Veneer both sides					
	SWRS-HVN	38mm & 44mm	930	2350	Solid Core 38mm/44mm +0.5mm Veneer both sides	6mm Steam Beech Matching Stain	45mm Rebated	90-275mm	Solid Wood Steam Beech Frame & 9mm Architrave	Stained to match door colour (Back side black japan+sealer)
		54mm	1150	2750	Solid Core 44mm+5mm MDF Crossband+0.5mm Veneer both sides					
	SWRS-HVS	38mm & 44mm	930	2350	Solid Core 38mm/44mm +0.5mm Veneer both sides	6mm Steam Beech Matching Stain	45mm Rebated	90-275mm	Solid Wood Steam Beech Frame & 9mm Architrave	Stained to match door colour (Back side black japan+sealer)
		54mm	1150	2750	Solid Core 44mm+5mm MDF Crossband+0.5mm Backer Veneer both sides					

TECHNICAL SPECIFICATIONS

FD30
DOORSET

	PRODUCT CODE	DOOR LEAF SPECIFICATION					FRAME SPECIFICATION			
		Door Thickness	Width mm Max	Height mm Max	Door Construction	Lipping	Thickness	Section Width	Frame Material	Frame Finish
LAMINATED	HDS-FD30-L	44mm	1150 1075 915	2130 2350 2750*	Fire Rated Solid Core 44mm*0.8mm Laminate both sides	6mm Steam Beech Matching Stain	30mm	90-275mm	LVL with solid steam beech stopper 15mm ,9mm architrave	Stained to match door colour
	SWRS-FD30-L	44mm	1150 1075 915	2130 2350 2750*	Fire Rated Solid Core 44mm*0.8mm Laminate both sides	6mm Steam Beech Matching Stain	45mm Rebated	90-275mm	Solid Wood Steam Beech Frame , architrave 9mm	Stained to match door colour
VENEERED	HDS-FD30-VN	44mm	1150 1075 915	2130 2350 2750*	Fire Rated Solid Core 44mm*0.5mm Veneer both sides	6mm Steam Beech Matching Stain	30mm	90-275mm	LVL with solid steam beech stopper 15mm ,9mm architrave	Stained to match door colour
	HDVN-FD30-VN	44mm	1150 1075 915	2130 2350 2750*	Fire Rated Solid Core 44mm*0.5mm Veneer both sides	6mm Steam Beech Matching Stain	30mm	90-275mm	LVL with 0.5mm Veneer, LVL Stopper 15mm with 0.5mm Veneer, LVL Architrave 12mm with 0.5mm Veneer	a) Veneer Stained-Front b) Sealer-Back c) Side-Veneer Edge Banding
	HDS-FD30-VS	44mm	1150 1075 915	2130 2350 2750*	Fire Rated Solid Core 44mm*0.5mm Backer Veneer both sides	6mm Steam Beech Matching Stain	30mm	90-275mm	LVL with solid steam beech stopper 15mm ,9mm architrave	Stained to match door colour
	HDVS-FD30-VS	44mm	1150 1075 915	2130 2350 2750*	Fire Rated Solid Core 44mm*0.5mm Backer Veneer both sides	6mm Steam Beech Matching Stain	30mm	90-275mm	LVL with 0.5mm Veneer, LVL Stopper 15mm with 0.5mm Veneer, LVL Architrave 12mm with 0.5mm Veneer	a) Veneer Stained-Front b) Sealer-Back c) Side-Veneer Stained Edge Banding
	SWRS-FD30-VN	44mm	1150 1075 915	2130 2350 2750*	Fire Rated Solid Core 44mm*0.5mm Veneer both sides	6mm Steam Beech Matching Stain	45mm Rebated	90-275mm	Solid Wood Steam Beech Frame , architrave 9mm	Stained to match door colour
	SWRS-FD30-VS	44mm	1150 1075 915	2130 2350 2750*	Fire Rated Solid Core 44mm*0.5mm Backer Veneer both sides	6mm Steam Beech Matching Stain	45mm Rebated	90-275mm	Solid Wood Steam Beech Frame , architrave 9mm	Stained to match door colour

*Dimensions above 2440mm are subject to availability of facing Veneer/Laminate.

TECHNICAL SPECIFICATIONS

FD60
DOORSET

	PRODUCT CODE	DOOR LEAF SPECIFICATION					FRAME SPECIFICATION			
		Door Thickness	Width mm Max	Height mm Max	Door Construction	Lipping	Thickness	Section Width	Frame Material	Frame Finish
LAMINATED	HDS-FD60-L	54mm	1082	2357	Fire Rated Solid Core 44mm*5mm MDF Crossband & 0.8mm Laminate both sides	6mm Steam Beech Matching Stain	30mm	90-275mm	LVL,Solid Steam Beech Stopper 15mm & Architrave 9mm	Stained to match door colour
	HDL-FD60-L	54mm	1082	2357	Fire Rated Solid Core 44mm*5mm MDF Crossband & 0.8mm Laminate both sides	6mm Steam Beech Matching Stain	30mm	90-275mm	LVL with 0.5mm Veneer, LVL Stopper 15mm, 12 mm architrave	a) Laminate-Front b) Backer-Back c) Side-PVC Edge Banding
	SWRS-FD60-L	54mm	1082	2357	Fire Rated Solid Core 44mm*5mm MDF Crossband & 0.8mm Laminate both sides	6mm Steam Beech Matching Stain	45mm Rebated	90-275mm	Solid Wood Steam Beech Frame,stopper 15mm, Architrave 9mm	Stained to match door colour
VENEERED	HDS-FD60-VN	54mm	1082	2357	Fire Rated Solid Core 44mm*5mm MDF Crossband & 0.5mm Veneer both sides	6mm Steam Beech Matching Stain	30mm	90-275mm	LVL,Solid Steam Beech Stopper 15mm & Architrave 9mm	Stained to match door colour
	HDVN-FD60-VN	54mm	1082	2357	Fire Rated Solid Core 44mm*5mm MDF Crossband & 0.5mm Veneer both sides	6mm Steam Beech Matching Stain	30mm	90-275mm	LVL with 0.5mm Veneer,LVL Stopper 15mm with 0.5mm veneer , 12 mm architrave	a) Veneer-Front b) Sealer-Back c) Side-Veneer Edge Banding
	HDS-FD60-VS	54mm	1082	2357	Fire Rated Solid Core 44mm*5mm MDF Crossband & 0.5mm Backer Veneer both sides	6mm Steam Beech Matching Stain	30mm	90-275mm	LVL,Solid Steam Beech Stopper 15mm & Architrave 9mm	Stained to match door colour
	HDVS-FD60-VS	54mm	1082	2357	Fire Rated Solid Core 44mm*5mm MDF Crossband & 0.5mm Backer Veneer both sides	6mm Steam Beech Matching Stain	30mm	90-275mm	LVL with 0.5mm Veneer,LVL Stopper 15mm with 0.5mm veneer , 12 mm architrave	a) Veneer Stained-Front b) Sealer-Back c) Side-Veneer Stained Edge Banding
	SWRS-FD60-VS	54mm	1082	2357	Fire Rated Solid Core 44mm*5mm MDF Crossband & 0.5mm Backer Veneer both sides	6mm Steam Beech Matching Stain	45mm Rebated	90-275mm	Solid Wood Steam Beech Frame,stopper 15mm, Architrave 9mm	Stained to match door colour
	SWRS-FD60-VN	54mm	1082	2357	Fire Rated Solid Core 44mm*5mm MDF Crossband & 0.5mm Veneer both sides	6mm Steam Beech Matching Stain	45mm Rebated	90-275mm	Solid Wood Steam Beech Frame,stopper 15mm, Architrave 9mm	Stained to match door colour

TECHNICAL SPECIFICATIONS

FD90 DOORSET

PRODUCT CODE		DOOR LEAF SPECIFICATION					FRAME SPECIFICATION			
		Door Thickness	Width mm Max	Height mm Max	Door Construction	Lipping	Thickness	Section Width	Frame Material	Frame Finish
LAMINATED	SWES-FD90-L	64mm	910	2085	Fire Rated Solid Core 64mm*0.8mm Laminate both sides	3mm Solid Wood Matching Stain	45mm*18mm Engineered	90-275mm	Solid Wood Frame Solid Wood Stopper 18mm Solid Wood Architrave 9mm	Stained to match door colour
	SWES-FD90-VN	64mm	910	2085	Solid Core 64mm*0.5mm Veneer both sides	3mm Solid Wood Matching Stain	45mm*18mm Engineered	90-275mm	Solid Wood Frame Solid Wood Stopper 18mm Solid Wood Architrave 9mm	Stained to match door colour
	SWES-FD90-VS	64mm	910	2085	Solid Core 64mm*0.5mm Backer Veneer both sides	3mm Solid Wood Matching Stain	45mm*18mm Engineered	90-275mm	Solid Wood Frame Solid Wood Stopper 18mm Solid Wood Architrave 9mm	Stained to match door colour

TECHNICAL SPECIFICATIONS

FD120 DOORSET

PRODUCT CODE		DOOR LEAF SPECIFICATION					FRAME SPECIFICATION			
		Door Thickness	Width mm Max	Height mm Max	Door Construction	Lipping	Thickness	Section Width	Frame Material	Frame Finish
LAMINATED	SWES-FD120-L	64mm	910	2085	Solid Core 64mm*0.8mm Laminate both sides	3mm Solid Wood Matching Stain	45mm*18mm Engineered	90-275mm	Solid Wood Frame Solid Wood Stopper 18mm Solid Wood Architrave 9mm	Stained to match door colour
	SWES-FD120-VN	64mm	910	2085	Solid Core 64mm*0.5mm Veneer both sides	3mm Solid Wood Matching Stain	45mm*18mm Engineered	90-275mm	Solid Wood Frame Solid Wood Stopper 18mm Solid Wood Architrave 9mm	Stained to match door colour
	SWES-FD120-VS	64mm	910	2085	Solid Core 64mm*0.5mm Backer Veneer both sides	3mm Solid Wood Matching Stain	45mm*18mm Engineered	90-275mm	Solid Wood Frame Solid Wood Stopper 18mm Solid Wood Architrave 9mm	Stained to match door colour

Project - Mahaveer Ranches, Bengaluru
Door Leaf - Non-Fire Rated Veneered Door
Door Frame - Rebated Solid Wood Frame





www.mikasadoors.com



Greenlam Industries Limited
2nd Floor, West Wing, Worldmark 1, Aerocity IGI Airport,
Hospitality District, New Delhi - 110 037.

For a real experience with real wood, scan the QR code.
To know more, call on toll free no.: 1800-833-0004 | info@mikasadoors.com



Wood being a natural product, the grain, shade, and texture may vary.

We acknowledge that wood is precious and thereby all Mikasa Doors & Frames use only ethically sourced wood without disturbing the natural balance of our beautiful ecosystem.